



®

## Product Specification

# PORTER'S FRENCH WASH™

---

### **PRODUCT DESCRIPTION:**

Porter's French Wash™ creates the look of delicate broken colour - a subtle marble-like finish. This elegant, timeless effect can be created by both the professional painter and the DIY home decorator, using Porter's two step French Wash™ system. French Wash™ can be ragged, rag rolled, dragged or sponged to produce a variety of painted effects. Step 1 is the application of Porter's Low Sheen Acrylic, tinted to an appropriate colour and used as a base. Step 2 is the application and ragging of the French Wash™ (usually tinted slightly darker) over the top of the Low Sheen Acrylic, creating the soft, broken colour effect.

### **LOCATION:**

Interior.

### **ENVIRONMENTAL INFORMATION:**

Porter's Paints use only premium grade raw materials and wherever possible we buy from Australian suppliers. Our manufacturing processes are designed for maximum performance with minimum impact on the environment and user health.

## **SUGGESTED APPLICATIONS:**

Can be applied to most suitably prepared plasterboard, plaster, wood, masonry and previously painted surfaces.

## **COLOURS:**

Choose from our large range of colours or ask our colourist for your own custom colour.

## **LIMITATIONS:**

Do not apply in high humidity, below 10°C or above 30°C.

## **PREPARATION:**

### **NEW/UNPAINTED SUBSTRATES:**

Substrate should be a clean well-held surface free from loose material, dirt, grease, oil and mould. Dust down before proceeding.

On new unpainted plasterboard sheeting spot prime all joints then apply by brush, roller or spray 1 or 2 coats Porter's Prepare & Prime. Allow 2 hours dry time before overcoating.

On new unpainted fresh set plaster do not proceed until plaster has thoroughly set and has dried completely. Firstly, apply 1 coat Porter's Mineral Silicate Primer by brush or roller. Touch dry 20 minutes. Allow 2 hours dry time. Then apply by brush, roller or spray 1 coat Porter's Prepare & Prime. Allow 2 hours dry time before recoating or overcoating with top coat.

On bare masonry surfaces such as, render or brick, spot prime all repaired areas with Porter's Limeproof Undercoat Sealer, then apply 1 coat of same to entire area by brush, medium nap roller or spray. Touch dry in 1 hour. Allow 6 hours dry time before recoating or over-coating.

## PREVIOUSLY PAINTED SUBSTRATES:

Provided the surface is clean and sound, Porter's Low Sheen Acrylic is self-priming and can be applied directly over previously painted surfaces.

All varnishes, polyurethanes or surfaces previously painted with oil-based enamel paint should be thoroughly sanded to remove gloss and to create a "keyed" surface. Loose, peeling or flaking paint must be made sound by scraping off loose paint. Fill nail holes and cracks with suitable filler, sand and dust off. Spot prime all joints and repaired areas with Porter's Prepare & Prime, then apply one coat of same to entire area.

Allow 2 hours dry time before recoating or overcoating with top coat.

## **APPLICATION:**

### STEP 1 – APPLICATION OF PORTER'S LOW SHEEN ACRYLIC:

Stir paint thoroughly prior to use. Apply two coats by brush, spray, or a medium nap roller. Touch dry in 1 hour. Allow minimum 2 hours dry time between coats. Allow 18-24 hours dry time.

### STEP 2 – APPLICATION OF FRENCH WASH:

(For non-professional painters, the application of French Wash™ is a two-person operation). Starting at the top left-hand corner of the wall the first person should apply French Wash™ using a wide brush (50-75mm) in a random pattern. It is important that good coverage is achieved and there are no areas where the product is not completely applied. Following closely behind, the second person creates the desired pattern by ragging muslin cloth over the freshly painted French Wash™ surface, turning the cloth in your hand to avoid a "stamped" pattern and to use dry areas of cloth.

The method we recommend is not to hold the muslin on the surface and roll, but to use a large amount (at least 5m) of scrunched muslin and "pounce" or press this quickly and repeatedly to the wall, absorbing the French Wash and leaving a broken, subtle pattern of colour.

Care should always be taken to leave a wet edge (at least 15cm wide). Do not go back over completed work. Do not stop in the middle of a wall. All work should be arranged to allow completion at a natural division such as a corner. Corners can be ragged by flicking the muslin into the corner.

Touch dry in 2 hours. Allow 6 hours dry time.

Please Note: Do not change roles during application as each person has an individual style or technique, and an inconsistent result will be obvious on the wall.

If a second coat of French Wash™ is required (either in the same or a different colour), allow first coat 24 hours dry time.

IN PICTURES:

1.



2.



3.



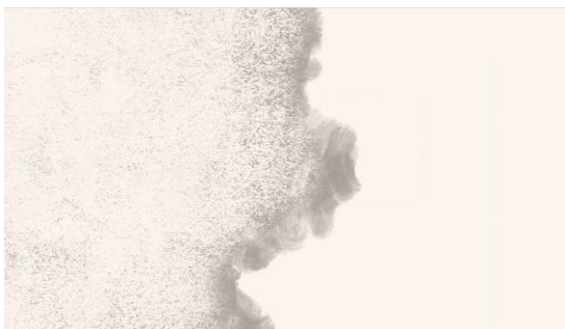
4.



5.



6.



7.



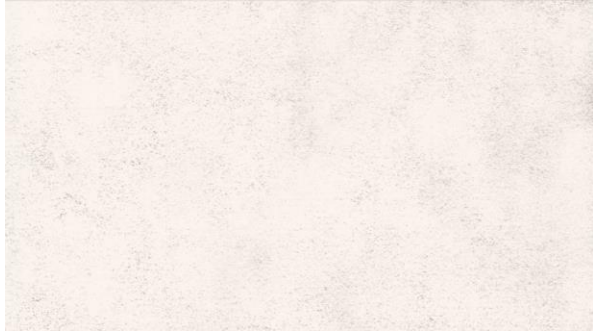
8.



9.



10.



#### ADDITIONAL APPLICATION TIPS:

*For a softer, more subtly aged look* – just when the French Wash™ is nearly dry, use a dry flogger brush to lightly brush in all directions, breaking up darker areas and creating a very subtle colour variation.

*For a more complex colour layered effect* – multiple coats of French Wash™ in varying colours can be added, if the previous coat is completely dry.

#### **COVERAGE RATES:**

Porter's Low Sheen Acrylic covers approximately 12-14m<sup>2</sup> per litre, depending upon porosity, surface texture and wastage rates.

Porter's French Wash™ covers approximately 25m<sup>2</sup> per litre, depending upon porosity, surface texture and wastage rates.

## **WASH UP:**

Water.

## **COMPLEMENTARY PRODUCTS:**

Porter's Prepare & Prime (coverage 12-14m<sup>2</sup> per litre).

Porter's Limeproof Undercoat Sealer (12m<sup>2</sup> per litre).

Porter's Universal Primer (coverage 10-12m<sup>2</sup> per litre).

Mineral Silicate Primer (coverage 10m<sup>2</sup> per litre) is recommended for priming new set plaster before undercoating.

## **PACKAGING:**

Porter's Low Sheen Acrylic is available in 1 litre, 4 litre, 10 litre & 15 litre sizes.

Porter's French Wash™ is available in 500ml, 1 litre, 2 litre, 4 litre & 15 litre sizes.

## **STORAGE:**

Store in a cool dry area, protected from frost.

## **PRECAUTIONS:**

Keep out of reach of children. Avoid swallowing. Avoid eye contact. Avoid prolonged skin contact. Provide adequate ventilation. If accidental contact occurs, rinse immediately with water. Check colour before use.

## **MANUFACTURER'S/DISTRIBUTOR'S DETAILS:**

Porter's Paints

15 Gow St

Padstow NSW 2211

Australia

Phone: (02) 9698-5322

Toll free: 1800 656 664

Fax: (02) 9699-5322

E-mail: [enquiries@porters.com.au](mailto:enquiries@porters.com.au)

Web: [www.porterspains.com](http://www.porterspains.com)

Porter's Paints

150 Hutt Park Rd

Gracefield

Lower Hutt 5010

New Zealand

Ph: 0800 672 468